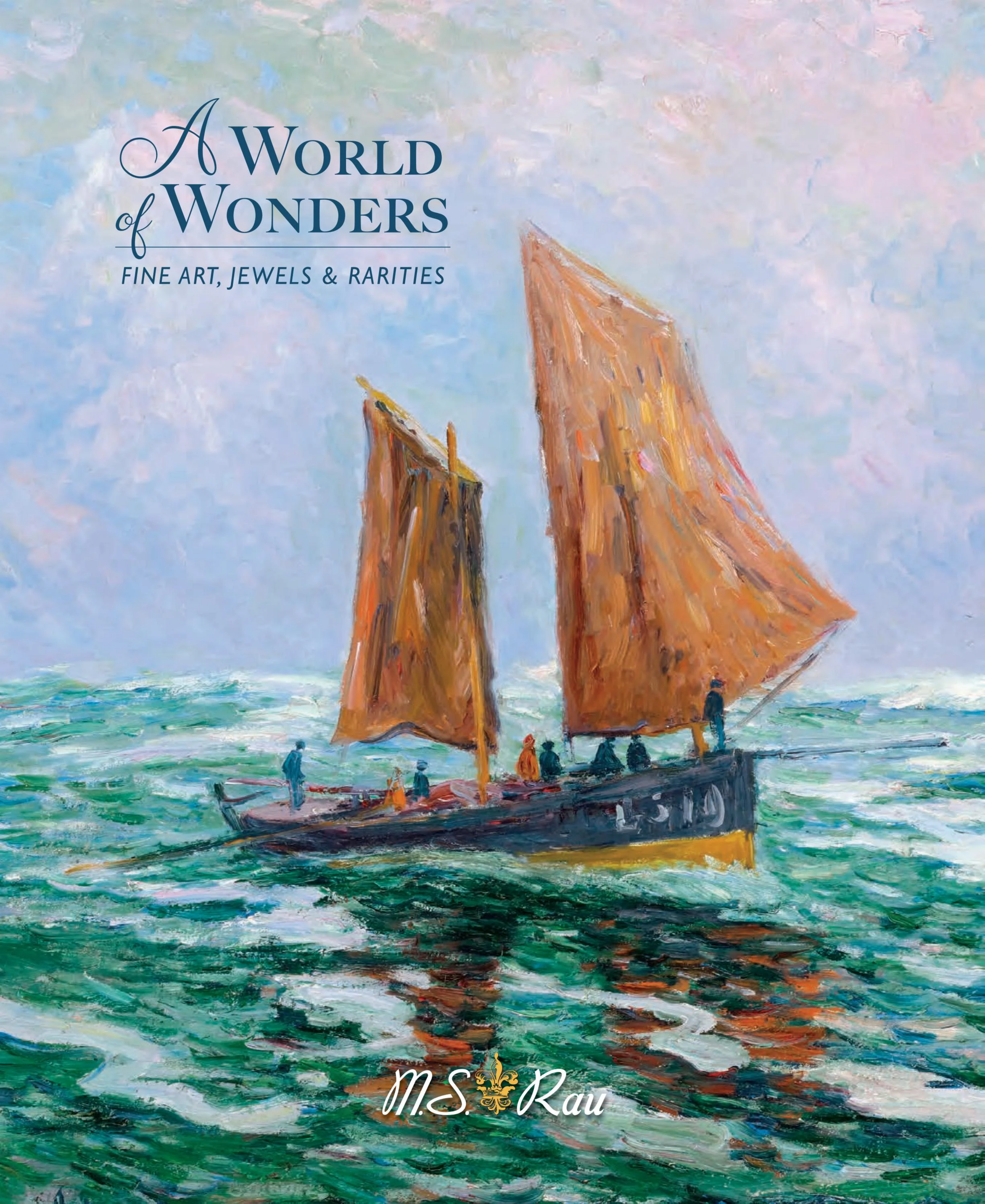


A WORLD of WONDERS

FINE ART, JEWELS & RARITIES



M.S.  Rau



18th-Century Dutch Musical Clock

This Dutch musical bracket clock is a masterpiece in pristine condition. It offers a selection of tunes or chimes to mark the passing of time. Mid-18th-century.

28 $\frac{1}{2}$ "h x 9 $\frac{1}{4}$ "w x 9 $\frac{3}{8}$ "d.

#31-8824 | \$88,500

ENHANCE YOUR EXPERIENCE

Look for these codes to learn more about an item or to watch a video



Watch a video
about this clock



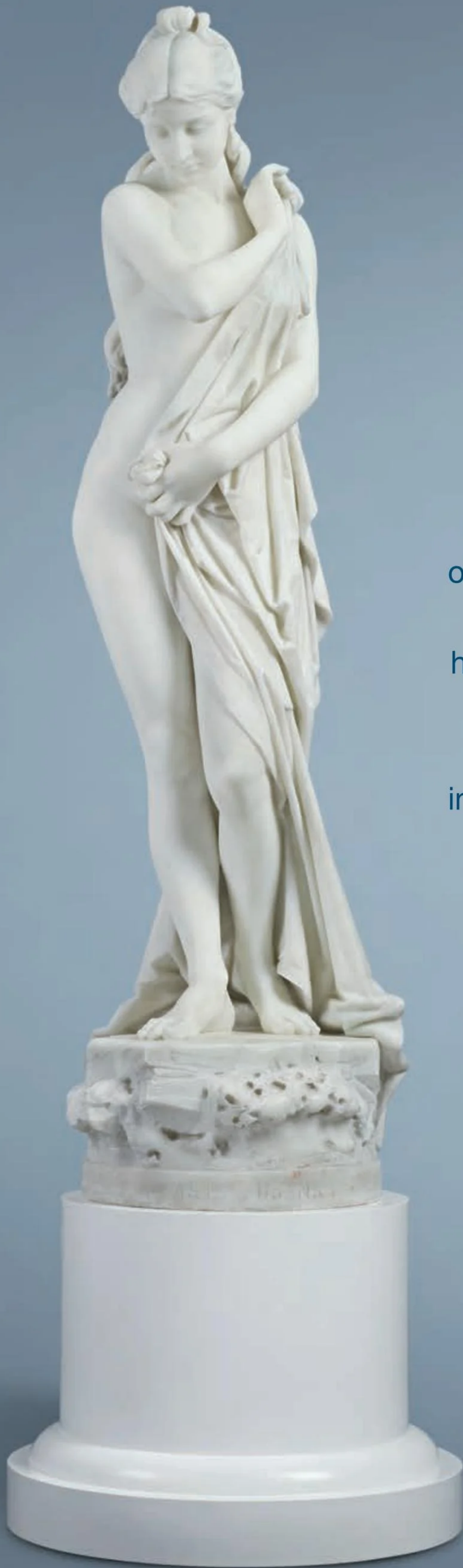
A WORLD of WONDERS

FINE ART, JEWELS & RARITIES

M.S.Rau is honored to celebrate 112 years of connecting passionate collectors with extraordinary works of art. This year has been a landmark one, highlighted by exciting milestones that underscore our unwavering commitment to excellence. Our debut at TEFAF Maastricht in the spring garnered widespread acclaim, and that momentum propelled our first-ever gallery expansion westward with the opening of our pop-up gallery in Aspen for the summer season. This fall, we will present a special exhibition exploring the artistic brilliance of Marc Chagall and his contemporaries. Learn more about this exhibition on the interior back cover.

While these recent ventures mark new chapters in our history, this catalog exemplifies our longstanding tradition of offering an unparalleled selection of fine art and antique treasures. Within its pages, you will discover a breathtaking array of masterful canvases, rare gemstones, exquisite objets d'art and more, all created by history's most celebrated artists and makers. From the exceptional silver artistry of Fabergé to a significant landscape by Impressionist pioneer Eugène Boudin, we present a collection unlike any other.

We thank you for your continued trust as we collaborate with you in building world-class collections. As you explore this catalog, if anything piques your interest, please don't hesitate to reach out to your dedicated sales consultant.



VISUAL VOYAGE

Looking upon a masterpiece is a journey of discovery—an encounter that captivates the heart and the mind. M.S. Rau is honored to present the following collection of exceptional, museum-quality fine art, which offers a glimpse into the artists' inner worlds, revealing their genius through strokes of paint and sculpted forms.



URBANO LUCCHESI

1844-1906 | Italian

La Casta Susanna

Late 19th century | Marble | Signed "Lucchesi"

This magnificent sculpture was created by Urbano Lucchesi, one of the most prominent Italian artists of the 19th century. The work showcases the famed Susanna, the virtuous wife unjustly accused of adultery in the Book of Daniel, depicted in her elegant *contrapposto* stance.

Marble: 54½" h x 15" w x 14½" d

#31-8802 | \$124,500



SIR WINSTON CHURCHILL

1874-1965 | British

Coast Scene Near Lympne

Circa 1930 | Oil on canvas

Immediately recognizable as one of the most important political figures in world history, Sir Winston Churchill was also a dedicated painter, pursuing this passion for over 40 years. The esteemed statesman once remarked that without painting he “couldn’t bear the strain of things.” In this artwork, *Coast Scene Near Lympne*, Churchill masterfully captures one of his favored subjects: the seascape.

Churchill painted this captivating composition at the Port Lympne estate, a pivotal gathering place for the intellectual and political luminaries of the era, which was owned by Sir Philip Sassoon. Demonstrating Churchill’s skill, the shimmering reflections and grey clouds hovering over the bay create a mesmerizing and inviting scene.

Canvas: 20”h x 24”w | Frame: 27”h x 31¹/₄”w

#31-8039 | \$1,985,000









MARC CHAGALL

1887-1985 | Russian

Grand bouquet et fruits devant la fenêtre à Paris

Circa 1965 | Pastel and gouache on Japan paper
Stamped with signature "Marc Chagall" (lower right)

Marc Chagall fundamentally transformed 20th-century art with his imaginative compositions and vibrant use of color that transcended cultural boundaries. This monumental work, teeming with life, exemplifies these qualities in one of his most enduring subjects: the floral still life.

For Chagall, flowers offered an opportunity to explore a rich color palette imbued with symbolic meanings and emotions, including the romantic love he shared with his late wife, Bella, who is depicted gracefully floating above the bouquet. Chagall's creative output is known for being deeply personal and self-referential, illustrating his inner reflections and cherished memories.

Paper: 39"h x 24¹/₂"w | Frame: 55"h x 40³/₄"w

#31-8820 | \$1,750,000





EUGÈNE BOUDIN

1824-1898 | French

Beaulieu, La Baie des Fourmis, effet du matin

Dated 1892 | Oil on canvas | Signed, dated and inscribed
"E. Boudin 92 Beaulieu-Mars" (lower right)

The forefather of the Impressionists, Eugène Boudin is in exceptional form in this masterful seascape of the Bay of Ants at Beaulieu, France. Boudin, a pioneer of *plein air* painting, introduced Claude Monet and his friends to the practice of painting outdoors in 1857, fundamentally changing art history.

In this magnificent composition, the calm waters and majestic view of the horizon exemplify why Boudin was hailed as "the king of the skies" by Monet himself. Acquired by the renowned Paul Durand-Ruel, the dealer who legitimized the avant-garde Impressionists, this work underscores Boudin's enduring legacy that paved the way for Impressionism.

Canvas: 24"h x 34³/₄"w | Frame: 30¹/₈"h x 44"w

#31-8967 | \$598,500





JEAN-LÉON GÉRÔME

1824-1904 | French

La danse pyrrhique

Circa 1885 | Oil on canvas | Signed "J.L. Gérôme" (lower right)

This oil on canvas by the famed Jean-Léon Gérôme, entitled *La danse pyrrhique*, is among the most fascinating works ever composed by the Academic master's hand. Gérôme's iconic scenes of the East captivated a generation, and this depiction of the ritual Pyrrhic dance in Ancient Egypt showcases his unparalleled talent for vivid realism.

Jean-Léon Gérôme's significant contributions to Academic art have left a lasting legacy in the art world, with his works featured in prestigious museums such as the Metropolitan Museum of Art in New York and the Wadsworth Atheneum Museum of Art in Hartford, Connecticut, where the present work was once on display.

Canvas: 25³/₄"h x 36³/₈"w | Frame: 38¹/₂"h x 49¹/₄"w

#31-4731 | \$395,000



CHARLES LANDELLE

1821-1908 | French

Young girl from Tetouan, Morocco

Mid-to-late 19th century | Oil on canvas | Signed “C Landelle” (center right)

In this important oil on canvas, French Orientalist painter Charles Landelle captures the visage of a young Moroccan woman in a moment of tranquil contemplation. She is adorned in a richly embroidered kaftan and headdress, set against a backdrop of vivid red hues characteristic of Landelle’s style.

Landelle played a pivotal role in defining Orientalism, and his compositions of Eastern locales were beloved by artists such as Renoir and dignitaries like King Louis-Philippe and Napoleon III. His works can be seen in museums worldwide, including the Musée d’Orsay in Paris and the Palace of Versailles.

Canvas: 53¹/₄”h x 39¹/₄”w | Frame: 64¹/₄”h x 51¹/₈”w

#31-4686 | \$298,500





TSUGUHARU FOJITA

1886-1968 | Japanese-French

Portrait of a Mother and Child

Circa 1957 | Ink and watercolor on Japanese tissue | Signed “Foujita / Paris” (lower left)

An artistic luminary ahead of his time, Tsuguharu Foujita created a visual language—a highly original integration of Japanese styles with his own subjects. This virtuosic method is on full display in his remarkable composition, *Portrait of a Mother and Child*. Foujita masterfully combines traditional ink techniques with the age-honored motif of the Virgin and Child, a nod to his conversion to Catholicism.

Born and trained in Japan, Foujita relocated to Paris in 1913, where he thrived among avant-garde circles. His 1917 solo exhibition in Paris drew immense praise from Picasso, who was captivated by Foujita’s watercolors. Today, Foujita’s works reside in prestigious collections worldwide, including the Metropolitan Museum of Art in New York and the National Museum of Modern Art in Kyoto.

Paper: 12¹/₄”h x 9¹/₄”w | Frame: 20¹/₂”h x 17¹/₈”w

#31-7755 | \$285,000







SIR JOSHUA REYNOLDS

1723-1792 | British

***Sir Henry Bowles Howard,
12th Earl of Suffolk and 5th Earl of Berkshire***

Circa 1770 | Oil on canvas

The most important English portraitist of the 18th century was unequivocally Sir Joshua Reynolds. The artist received commissions only from the most elite clientele, including this magnificent portrait of Sir Henry Bowles Howard.

A distinguished politician and holder of the Knight of the Garter, Howard is brilliantly portrayed in Reynolds' Grand Manner style, uniquely adapted for portraiture. He appears stately, strong and intelligent, embodying the essence of a powerful leader. As the inaugural President of the Royal Academy, Reynolds established a standard of excellence that defined portrait painting of the era.

Canvas: 50 $\frac{1}{2}$ "h x 40 $\frac{1}{4}$ "w | Framed: 61"h x 52 $\frac{1}{2}$ "w

#31-8220 | \$248,500



DIEGO RIVERA

1886-1957 | Mexican

Vendedora

Dated 1937 | Watercolor on rice paper | Signed and dated “Diego Rivera 37” (lower right)

Diego Rivera, a titan of the early 20th-century avant-garde, defied traditional conventions to express his deep connection to Mexican culture through evocative and flattened forms. In *Vendedora*, Rivera beautifully captures Mexico’s agrarian life with a woman holding a woven bag, using a warm palette and a thoughtful expression.

Since 1964, Rivera’s artworks have been safeguarded as “artistic monuments” of Mexico, making them rare outside the country. His works are featured in prestigious collections worldwide, including the Museum of Modern Art in New York and the Centre Pompidou in Paris.

Paper: 15”h x 11”w | Frame: 26⁷/₈”h x 22¹/₂”w

#31-9079 | \$228,500







HENRY MORET

1856-1913 | French

Barque de pêche en mer

Dated 1912 | Oil on canvas | Signed and dated "Henry Moret 1912" (lower left)

In *Barque de pêche en mer*, Impressionist master Henry Moret stunningly captures the sublime beauty of the sea. With gestural brushstrokes and a mesmerizing display of color and texture, Moret showcases the ocean in all its glory.

A celebrated artist of the Pont-Aven School, Moret is renowned for his use of thick impasto and vivid portrayals of the sea's energetic vigor. His works are prominently displayed at prestigious institutions such as the State Hermitage Museum in St. Petersburg and the National Gallery of Art in Washington, D.C.

Canvas: 28³/₄"h x 36³/₈"w | Frame: 36⁵/₈"h x 44¹/₈"w

#31-6813 | \$168,500





FRANK SINATRA

1915-1998 | American

Red and Blue Star

Dated 1991 | Oil on canvas | Signed "Sinatra 91" (lower right)

Frank Sinatra, widely revered as the greatest American pop singer of the 20th century, also revealed his artistic prowess through painting. The iconic star's unique vision comes to life in this masterful canvas inspired by American abstractionist legends.

With its mesmerizing palette and precise brushwork, Sinatra creates an illusion of red and blue movement around a central white circle. Echoing the minimalist geometry of artists like Piet Mondrian and Frank Stella, this distinctive work stands as an emblem of the 20th century's avant-garde artistic movements.

Canvas: 52^{1/8}"h x 52"w | Frame: 53^{7/8}"h x 53^{5/8}"w

#31-8773 | \$124,500





AUGUSTE HERBIN

1882-1960 | French

Vases aux chrysanthèmes

Painted 1904 | Oil on canvas | Signed "Herbin" (lower right)

Auguste Herbin, a pioneering abstractionist, created this bold and vivid floral still life for the famed Salon des Indépendants in 1907. This composition marked a transformative phase in his artistic journey, where he began experimenting with Post-Impressionism and Fauvism.

Co-founding the Abstraction-Création group, Herbin was instrumental in shaping the avant-garde movements that transformed modern art. Today, his works are held in prestigious collections worldwide, including the Tate Modern in London, the Museum of Modern Art in New York and the Centre Pompidou in Paris.

Canvas: 32"h x 32"w | Frame: 40¹/₄"h x 40¹/₄"w

#31-8253 | \$98,500



EDOUARD LÉON CORTÈS

1882-1969 | French

Le terminus Madeleine-Bastille à Paris

20th century | Oil on canvas | Signed "Edouard Cortès" (lower right)

Known as the "Parisian Poet of Painting," Edouard Léon Cortès skillfully captures the allure of the City of Lights during the Belle Époque era, a time when Paris thrived with prosperity and artistic fervor.

This large oil on canvas portrays a vibrant autumn evening at the Madeleine-Bastille terminus, a historic thoroughfare in Paris. Cortès' exquisite depictions of Parisian life were highly coveted during his lifetime and continue to resonate with collectors and art enthusiasts worldwide.

Canvas: 18 $\frac{1}{2}$ "h x 21 $\frac{5}{8}$ "w | Frame: 25 $\frac{1}{2}$ "h x 29"w

#31-6977 | \$98,500







WILLY SCHLOBACH

1864-1951 | Belgian

Les falaises

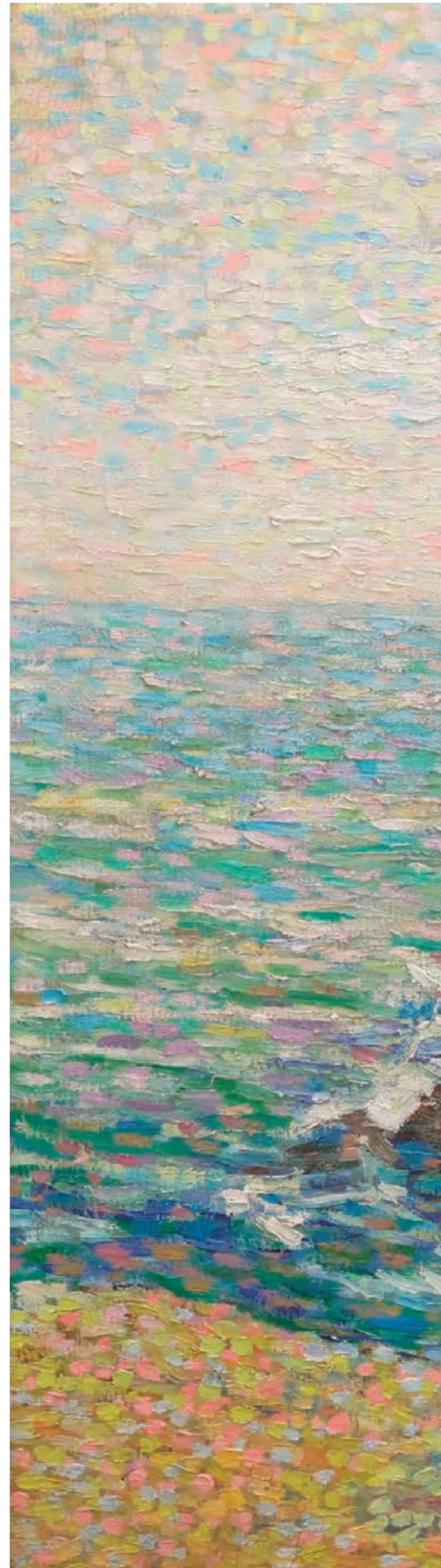
Dated 1907 | Oil on canvas | Signed "W.S." (lower right)

A coastal scene comes to life in *Les falaises* with Schlobach's bold palette, a hallmark of his Pointillist mastery. Inspired by Seurat, who dubbed him the "Belgian Divisionist," Schlobach uses vibrant dots of blues, violets, yellows and greens to depict crashing waves on a windswept day. His meticulous technique, with remarkable use of impasto, captures the very essence of the rocky cliffside.

Schlobach rose to prominence at a young age for his stunning Post-Impressionist works, solidifying his place among the leading Belgian painters.

Canvas: 29 $\frac{1}{8}$ "h x 36 $\frac{1}{4}$ "w | Frame: 36"h x 44 $\frac{1}{8}$ "w

#31-8364 | \$98,500









ANDREA LANDINI

1847-1935 | Italian

The Letter

19th century | Oil on canvas | Signed "A. Landini" (lower right)

This oil on canvas by Italian artist Andrea Landini offers a humorous glimpse into a private world where a sumptuously robed cardinal chuckles at a letter. Known for his playful takes on the clergy, Landini was beloved for his depictions of lavish lifestyles.

Landini showcases his technical mastery in every detail, from the finely carved chair to the elaborately patterned textiles. Trained at the Florentine Academy, Landini initially gained fame for portraits of high society, including the Princess of Wales. Today, his legacy is defined by witty genre scenes, particularly his acclaimed portrayals of cardinals.

Canvas: 18¹/₄"h x 15"w | Frame: 23¹/₄"h x 20¹/₂"w

#31-2429 | \$74,500



THEODORE EARL BUTLER

1861-1936 | American

Veules-les-Roses

Circa 1904-05 | Oil on canvas | Signed "T.E. Butler" (lower right)

Theodore Earl Butler, one of the most innovative American Impressionists, distinguished himself with this vibrant landscape that showcases his mastery of color, light and texture. Butler moved to Paris in 1885, where he gained acclaim at the Salon of 1888 and formed a profound friendship with Claude Monet, eventually marrying Monet's stepdaughter.

This canvas epitomizes Butler's oeuvre, capturing the picturesque coastal town of Veules-les-Roses with mesmerizing neon hues and dynamic brushstrokes, reflecting his modernist approach to natural beauty.

Canvas: 21³/₈"h x 15¹/₂"w | Frame: 31⁵/₈"h x 25⁵/₈"w

#31-9023 | \$54,500



T.E. Butler

JOHN SINGER SARGENT

1856-1925 | American

How They Met Themselves

Early 20th century | Bronze

By the late 19th century, John Singer Sargent had become the most admired and sought-after portraitist across both Europe and America, uniquely capturing the elegance of the Gilded Age. In addition to his painting prowess, Sargent was a talented sculptor. This rare bronze, inspired by the iconic watercolor by Pre-Raphaelite master Dante Gabriel Rossetti, showcases Sargent's admiration for Rossetti. Sargent even kept an engraving of *How They Met Themselves* in his studio. Sargent's interest in freestanding sculpture emerged later in his career, resulting in this limited series with only three known examples of this work. Another casting resides in the Victoria & Albert Museum in London.

On base: 17"h x 10³/₄"w x 8¹/₂"d

#31-4739 | \$62,500



CARL KAUBA

1865-1922 | Austrian

Native American Stepping into a Canoe

Late 19th Century | Bronze | Inscribed "C Kauba"

This bronze sculpture by Carl Kauba, a master artist of the American frontier, vividly depicts a Native American man carefully stepping into a canoe amid churning waters. Kauba is celebrated for his meticulous attention to detail, capturing lifelike motion and historically accurate attire, exemplified here in his subject's clothing and distinctive weapons. Today, Kauba's sculptures are held in prestigious collections, including the Smithsonian American Art Museum and the Art Institute of Chicago.

Bronze: 13¹/₄"h x 11¹/₂"w x 27"d

#31-7137 | \$48,500



OSCAR NEMON

1906-1985 | Croatian

Married Love (Sir Winston Churchill and Lady Clementine Spencer Churchill)

Circa 1978 | Bronze resin with green patina | Signed "Nemon" (on reverse)

This significant and sentimental sculpture, commissioned by Lady Churchill herself, was created by revered sculptor Oscar Nemon. As a Croatian who emigrated to Britain in 1938, Nemon lost the majority of his family in the Holocaust, and Churchill's efforts to defeat the Nazis deeply resonated with Nemon. Upon meeting the statesman in 1951, Nemon crafted a bust of Churchill on which Lady Churchill remarked, "That is how I see him and how I loved him."

Following Churchill's death, Lady Churchill requested that Nemon create this sculpture of the couple together. This remarkable bronze resin composition masterfully reflects the humanity and devotion between two of Great Britain's most prominent figures. An identical version of the sculpture resides in Blenheim Palace, the birthplace of Winston Churchill.

Bronze: 19"h x 29^{5/8}"w x 19"d

#31-6571 | \$78,500

CRAFTED WITH CARE

The exceptional finds in this selection of unique treasures have been crafted by the world's most renowned artisans. This carefully curated collection of rarities exemplifies the unmatched craftsmanship and sophistication of these bygone eras.



19th-Century Gilt Bronze & Egitto Serpentino Urn

This monumental 19th-century urn is modeled after the design of Pierre Gouthière, one of the last great gilders of Versailles under Louis XVI. Crafted from Egitto serpentino, the rare Egyptian hardstone, this urn exactly matches one in the Louvre. Circa 1840. 18 $\frac{1}{8}$ "h x 15"w x 12"d.

#31-8847 | \$48,850



Specimen Games Table attributed to Gillows

This magnificent table, attributed to Gillows of Lancaster, features one of the most exceptional English Blue John and fossil marble tops ever made, centered around an Ashford chessboard with carved rosewood details. Gillows' renowned craftsmanship can be found in royal collections and museums worldwide. Circa 1830. 29½" h x 25¼" dia.
#31-3862 | \$34,500



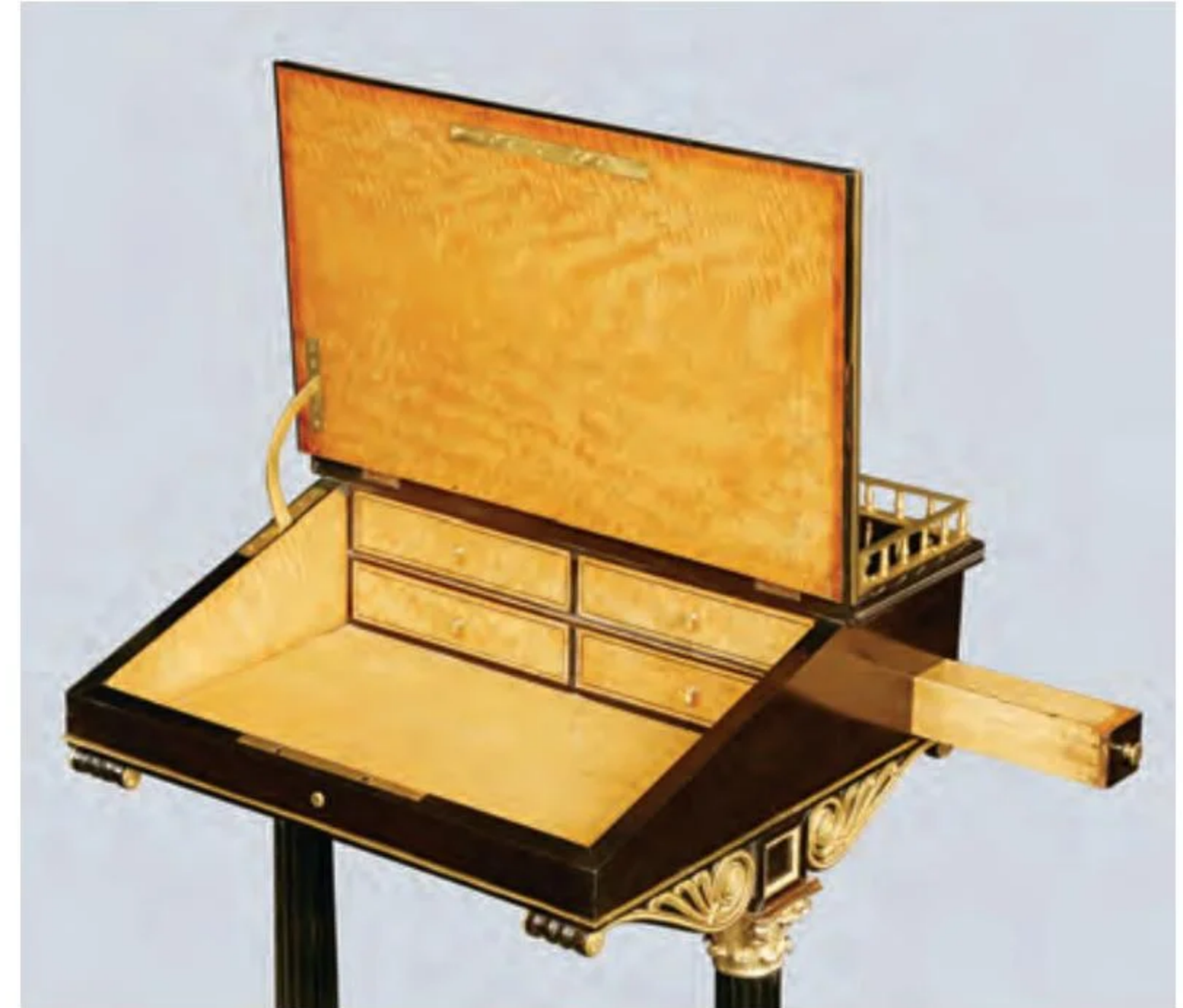
Oval Blue John Plateau

This oval plateau cradles an absolutely monumental specimen of Blue John, one of the rarest and most beautiful hardstones in the world. Large veins of Blue John were extinct by the early 19th century, making this grand and fully intact 25-inch slab astonishing, further elevated by its gilt bronze base. 2¾" h x 18⅜" w x 25½" d.
#31-2689 | \$54,500

French Charles X Writing Desk

This exceptional writing desk elevates the classic English Davenport design. Crafted from Ceylon ebony and West Indian satinwood with gilt bronze mounts, its galleried top and angled slope provide an ideal writing surface with a gilt bronze bookrest. The original leather writing surface conceals four drawers and a pen tray. This museum-quality creation showcases French furniture's technical prowess and high style. Early 19th century. 34"h x 23⁷/₈"w x 20⁷/₈"d.

#31-5723 | \$44,500





Thomas Chippendale Armchairs

These armchairs by the legendary Thomas Chippendale showcase his exquisite craftsmanship. Their expertly carved mahogany frames are complemented by their elegant yellow upholstery. As the first designer to have a style named after him rather than a monarch, Chippendale's influence on 18th-century furniture design is unmatched. 18th century. 35½" h x 24" w x 18" d.

#31-7519 | \$94,500



**Pair of Terrestrial and Celestial Globes
by J. & W. Cary**

This stately pair of Regency-era globes maps both heaven and earth with the most current geographical information of the time by one of London's most sought-after mapmaking firms, J. & W. Cary. The globes measure a robust 21 inches in diameter, making them significantly larger than standard globes of this period and thus exceedingly rare. Terrestrial globe dated 1815, with additions and corrections made in 1837. Celestial globe dated 1799. 47"h x 31"dia.

#31-8123 | \$198,500





English Jockey Scale by Pooley & Son

This handsome jockey scale, crafted by Pooley & Son of Liverpool, combines 19th-century innovation and the beloved sport of horse racing. Originating from the historic York Racecourse, an English venue with roots dating back to 208 CE, this scale played a crucial role in ensuring jockeys met weight regulations. Circa 1889. Marked "Henry Pooley & Son" and "York Racecourse 1889."

45 $\frac{1}{2}$ "h x 36 $\frac{7}{8}$ "w x 18 $\frac{5}{8}$ "d.

#31-4992 | \$36,500





**Thomas Webb & Sons Cameo Vase
by George Woodall**

Cameo glass is challenging to perfect, and the finest examples come from Thomas Webb & Sons. Among their artists, George Woodall stands out as the most esteemed, creating this tall Renaissance-inspired blue vase. Circa 1889. Signed. 12”h x 5½”w x 5”d.

#31-9570 | \$34,500



**Thomas Webb & Sons Cameo Amphora Vase
by Thomas Woodall**

At Webb & Sons, brothers Thomas and George Woodall expertly managed the cameo glass operations, producing exceptionally rare work. This intricately crafted amphora vase exemplifies Thomas Woodall’s design expertise. Circa 1884.

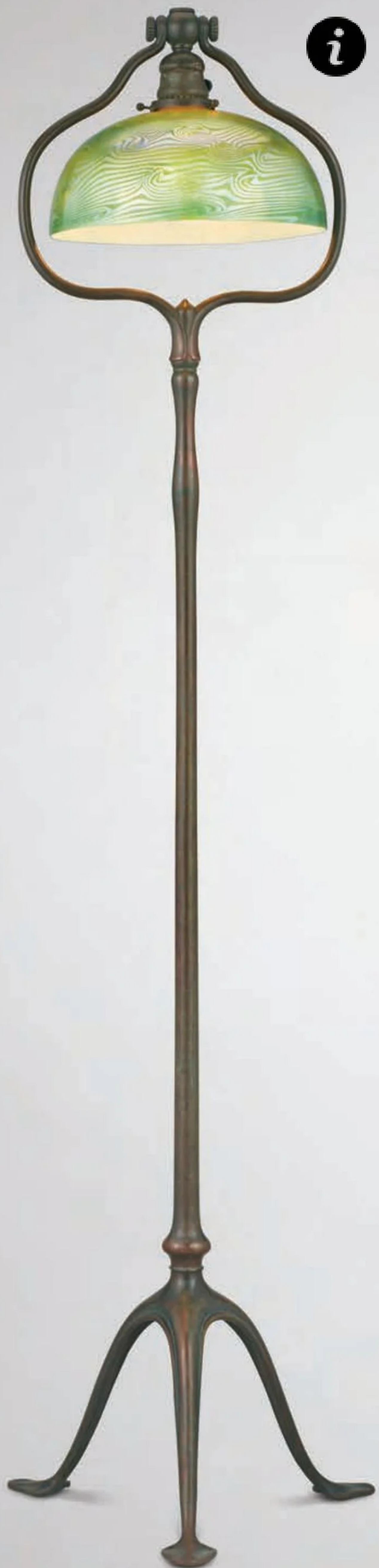
7½”h x 3¼”w x 3¼”d.

#31-9569 | \$24,500

Cameo Glass Chandelier by Muller Frères

This chandelier by Muller Frères features sunset-hued cameo glass panels mimicking floral blooms in a wrought iron frame. The fixture showcases the Muller brothers' legacy of unparalleled glass and acid-etched works from 1905 to the early 1930s. Circa 1930. Signed "Muller Frères Lunéville." 42"w x 29" dia. #31-8272 | \$34,500





TIFFANY STUDIOS

Louis Comfort Tiffany, son of Tiffany & Co.'s founder, forged his own path by establishing Tiffany Studios around the turn of the century. A prolific artist of the 19th and early 20th centuries, he revolutionized the decorative arts with the innovation of Favrite glass, inspired by the iridescence of ancient glass. His work epitomizes Art Nouveau's celebration of the union between art and nature.



Tiffany Studios Wave Glass Floor Lamp

This exceptional floor lamp features an iconic green and gold Wave pattern shade in Favrite glass. The original curved bronze base complements the shade, accentuating its vivid hues that transform into brilliant yellows and pinks when illuminated. Circa 1900. Shade signed "L. C. T." Base impressed "Tiffany Studios/ New York/423 H." 55½" h x 14" w x 12¼" d.

#31-8674 | \$44,500



Tiffany Studios Spider Lamp

This exceptional Favrite glass lamp features the rare *Spider* pattern with its original *Mushroom* bronze base. This combination is among the most desirable. Circa 1910. Shade and base marked "Tiffany Studios/New York." 17½"h x 15½"dia.

#31-8427 | \$98,500



French Empire Venus & Cupid Mantel Clock

Resting on its green-veined marble base, this beautifully gilt mantel clock presents the goddess Venus comforting her son Cupid, who has been stung by a bee. Embellished with classical ormolu motifs, this fully functional pendulum clock is a work of art. Circa 1805. Marked "Mesnil à Paris."

21³/₈"h x 15¹/₂"w x 6¹/₂"d.

#31-8647 | \$36,850

Cartier Art Deco Table Clock
This table clock exemplifies the pinnacle of Cartier's renowned luxury craftsmanship. Every element of this black lacquer timepiece is exceptional. Featuring geometric hands with a gilt outline, coral mounts and polished stone panels, this clock is the quintessence of Art Deco excellence. Circa 1935-38. Marked "Cartier Electric."

#31-6296 | \$28,500





**Skeleton Clock
by James Condliiff**

This exceptional Victorian-era skeleton clock is a masterpiece of 19th-century British horology. Renowned for their mechanical complexity, only 70 of Condliiff's clocks are known to exist today, including this rare brass example.

Chimes on the hour. Circa 1860. Marked "James Condliiff, Liverpool." 14³/₈"h x 11"w x 6"d.

#31-6987 | \$42,500

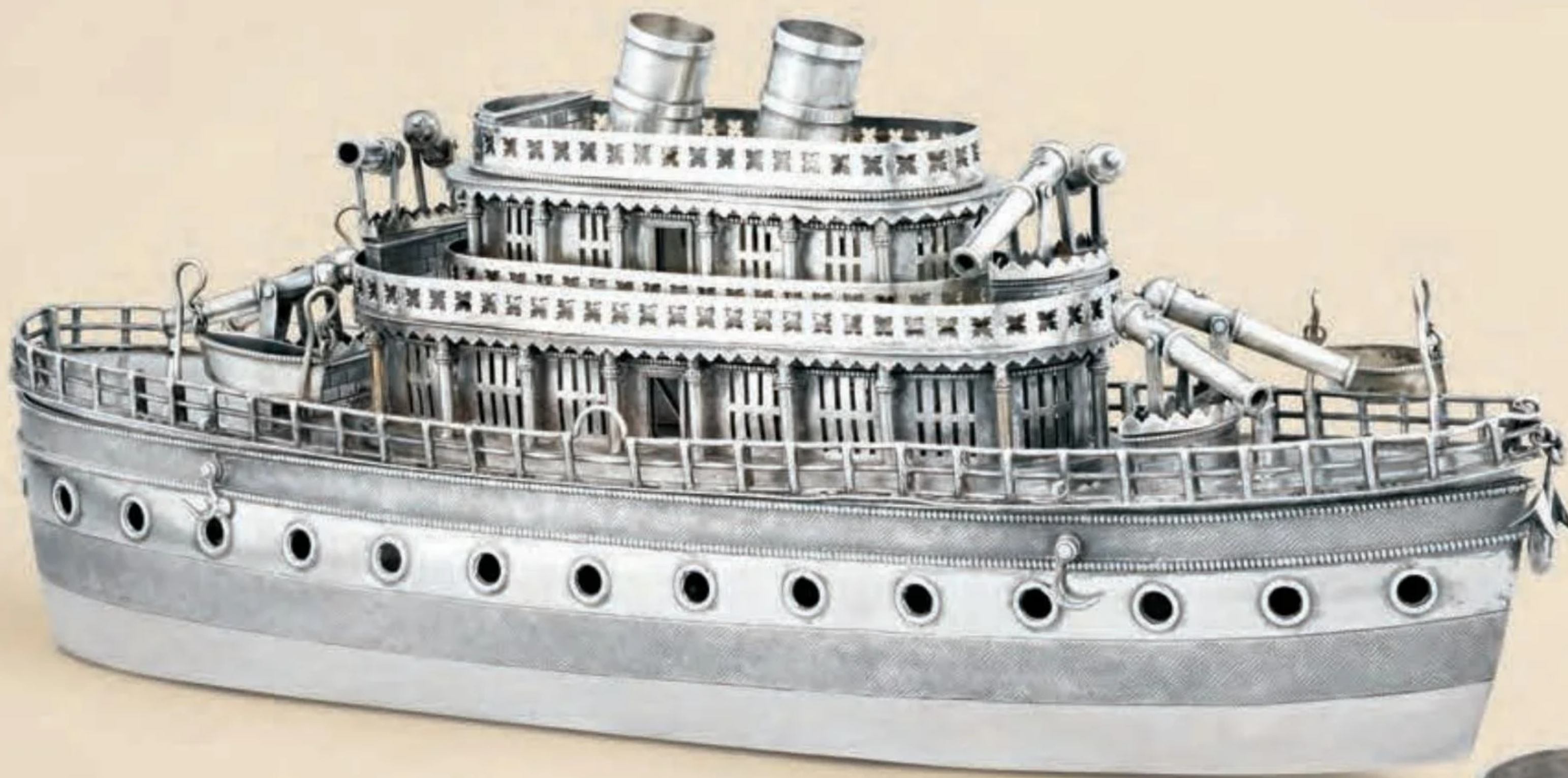


*Watch a video
about this clock*



SILVER SPLENDOR

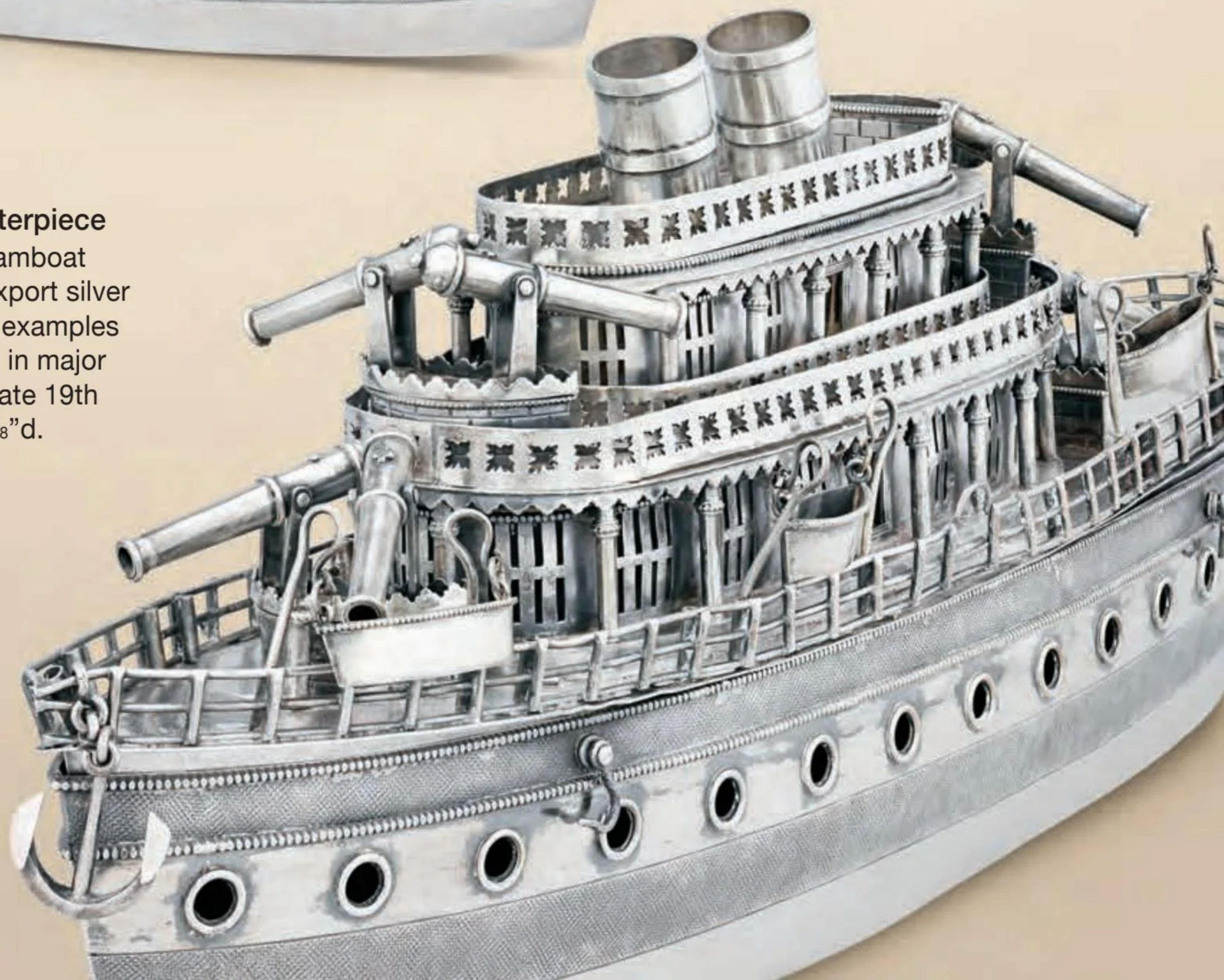
This section showcases some of the most storied silver works available today. With noble provenance and intricately detailed creations that transform metal into art, these masterpieces are all museum quality.



Chinese Export Silver Ship Centerpiece

This exceptionally rare silver steamboat showcases the artistry of Chinese export silver crafted for Western markets. Other examples of Chinese export silver are prized in major museum collections worldwide. Late 19th century. 7⁵/₈"h x 18⁷/₈"w x 4⁵/₈"d.

#31-7136 | \$22,850





Silver-Gilt Inkwell Presented by Queen Victoria

This silver-gilt inkwell holds a distinguished royal provenance, crafted for Queen Victoria in 1841 and gifted to Sir John Kirkland, her closest confidante during the Crimean War. The inkwell, expertly crafted in 1841 by the silversmiths to the Crown, Edward Barnard & Sons, bears the inscription: "The Gracious Gift of Her Majesty Queen Victoria to Sir John Kirkland 19 February, 1853." Hallmarked Edward Barnard & Sons, London, 1841. 6"h x 14"w x 12½"d.

#31-9395 | \$44,500



Russian Silver, Gold & Niello Topographical Snuff Box

This historic snuff box aided the navigation of Russia's Volga River region through its inlaid map of the river's path and surrounding hills with silver filigree detailing important trade centers and their distances. The underside offers census data of 299,801 "souls" across each town, including 830 merchants and 8,065 tradesmen. The remaining individuals are categorized into different classes of servants, reflecting their varying levels of expertise. A nearly identical snuff box is part of the permanent collection at the Metropolitan Museum of Art. Circa 1824. Hallmarked "AZS" in Cyrillic for Aleksander Schilin. $\frac{5}{8}$ "h x $3\frac{3}{8}$ "w x $2\frac{1}{8}$ "d.

#31-8239 | \$22,850



i

Fabergé Silver Service

This extraordinary 128-piece Fabergé silver service, complete in its original oak chest, is a museum-worthy treasure. Crafted by the Russian imperial jeweler, the world-famous House of Fabergé, the collection exemplifies the firm’s unrivaled legacy of exquisite craftsmanship. This service has remained complete and in pristine condition—an impressive feat given the scarcity of Fabergé silver. Each piece is hallmarked Fabergé, Moscow 1890-94 and bears the Imperial Warrant. Chest: 10¹/₄”h x 20³/₄”w x 16³/₈”d.

- This 128-piece service includes:

6 tea glasses

12 dinner knives

12 starter knives

12 dinner forks

12 starter forks

12 soup spoons
- 12 dessert spoons

24 teaspoons

12 sugar spoons

1 sugar bowl

1 creamer

1 egg cup

1 lemon fork

1 cheese knife

1 sugar shovel
- 1 cake slice

1 fish slice

1 tong

1 butter knife

1 tea strainer

1 large serving spoon

1 small serving spoon

1 ladle

#31-8432 | \$248,500





Art Deco Tea and Coffee Service by Crichton of London

This elegant Art Deco coffee and tea service by Crichton of London, one of the finest silversmiths of the early 20th century, consists of 11 octagonal pieces. Presented on a magnificent sterling tray, the set features dark wood handles and finials. Hallmarked 1925.

Tray: 30½" w x 17½" d. Kettle on stand: 14⅝" h.

#28-3892 | \$34,500



Napoleon III Duck Press

This rare Second Empire silverplate duck press exemplifies culinary excellence. The screw-type mechanism, used to extract juices essential for *canard au sang* or “pressed duck,” would have been a staple in the most prestigious French restaurants.

Circa 1850. 18 $\frac{1}{2}$ ”h x 13 $\frac{1}{2}$ ”w x 9 $\frac{1}{4}$ ”d.

#31-9243 | \$22,850



Paul Storr Monumental Ladle

This colossal 18th-century silver ladle by renowned Georgian silversmith Paul Storr is distinguished by its rarity and noble provenance. Likely commissioned for the ducal kitchen of Archibald Hamilton, 9th Duke of Hamilton, it is one of only two of its kind in Storr’s illustrious body of work and showcases early mastery from his Soho workshop. Hallmarked Paul Storr, London, 1798-99. 18 $\frac{1}{4}$ ”l x 4 $\frac{1}{8}$ ”h x 8 $\frac{7}{8}$ ”w.

#31-9393 | \$24,850

DISTINCTION AND DESIGN

This array of exquisite gemstones brings together wonders from the most exclusive mines and creations from the most acclaimed designers. Featuring bold colors and unique designs, the collection represents the pinnacle of fine jewelry.



Invisibly-Set Tsavorite Flower Brooch

Tsavorite garnets: 50.18 ctw. | Diamonds: 1.73 ctw.
18K white gold | 2" diameter

#31-8748 | \$88,500



Watch videos of
the jewelry on
these pages

Tiffany & Co. Kunzite Pendant

Kunzite: 50.00 ct. | Diamonds: 2.00 ctw.
Platinum | Pendant: 1½" length | Chain: 22" length

#31-7973 | \$39,850



Raymond Yard Untreated Paraiba Tourmaline Ring
GIA Certified

Paraiba tourmaline: 9.93 ct. | Diamonds: 1.07 ctw.
Platinum

#31-7836 | \$78,500



Van Cleef & Arpels Diamond Flower Pendant
Signed "VCA"

Diamonds: 1.92 ctw. | Pink sapphires: 0.40 ctw.
18K yellow gold | Chain: 15" length

#31-9426 | \$29,850



Van Cleef & Arpels Diamond Flower Ring
Signed "VCA"

Diamonds: 1.92 ctw. | Pink sapphires: 0.40 ctw.
18K yellow gold

#31-9425 | \$29,850



Cartier Diamond Bypass Ring
Signed "Cartier"

Diamonds: 5.00 ctw.
18K yellow gold

#31-4020 | \$36,500



Watch videos of
the jewelry on
these pages



Diamond Fleur-de-lis Pendant Brooch

Diamonds: 2.00 ctw.
Platinum | Pendant: 1½" length

#31-8537 | \$28,500



Rose Cut Diamond Bangle

Diamonds: 21.97 ctw.
18K white gold

#31-8546 | \$48,500



Diamond Chandelier Earrings

Diamonds: 10.00 ctw. | 14K white gold
2¼" length | 20th century

#31-8134 | \$46,500



Raymond Yard Rabbit Golf Caddy Brooch
Signed "Yard"

This iconic golfer caddy brooch is the creation of the renowned jeweler Raymond Yard. The dapper rabbit is adorned with pavé set sapphires, diamonds and a single ruby as his eye—along with enamel accents. First created in 1928, Raymond Yard's rabbit brooches were delightful representations of the Roaring Twenties flapper culture.

Sapphires: 1.20 ctw. | Diamonds: 1.21 ctw.
Platinum | 1⁷/₈" length
#31-9122 | \$78,500

Ceylon Sapphire Earrings
C. Dunaigre Certified

Ceylon sapphires: 4.57 ctw.
Platinum

#31-9138 | \$64,500



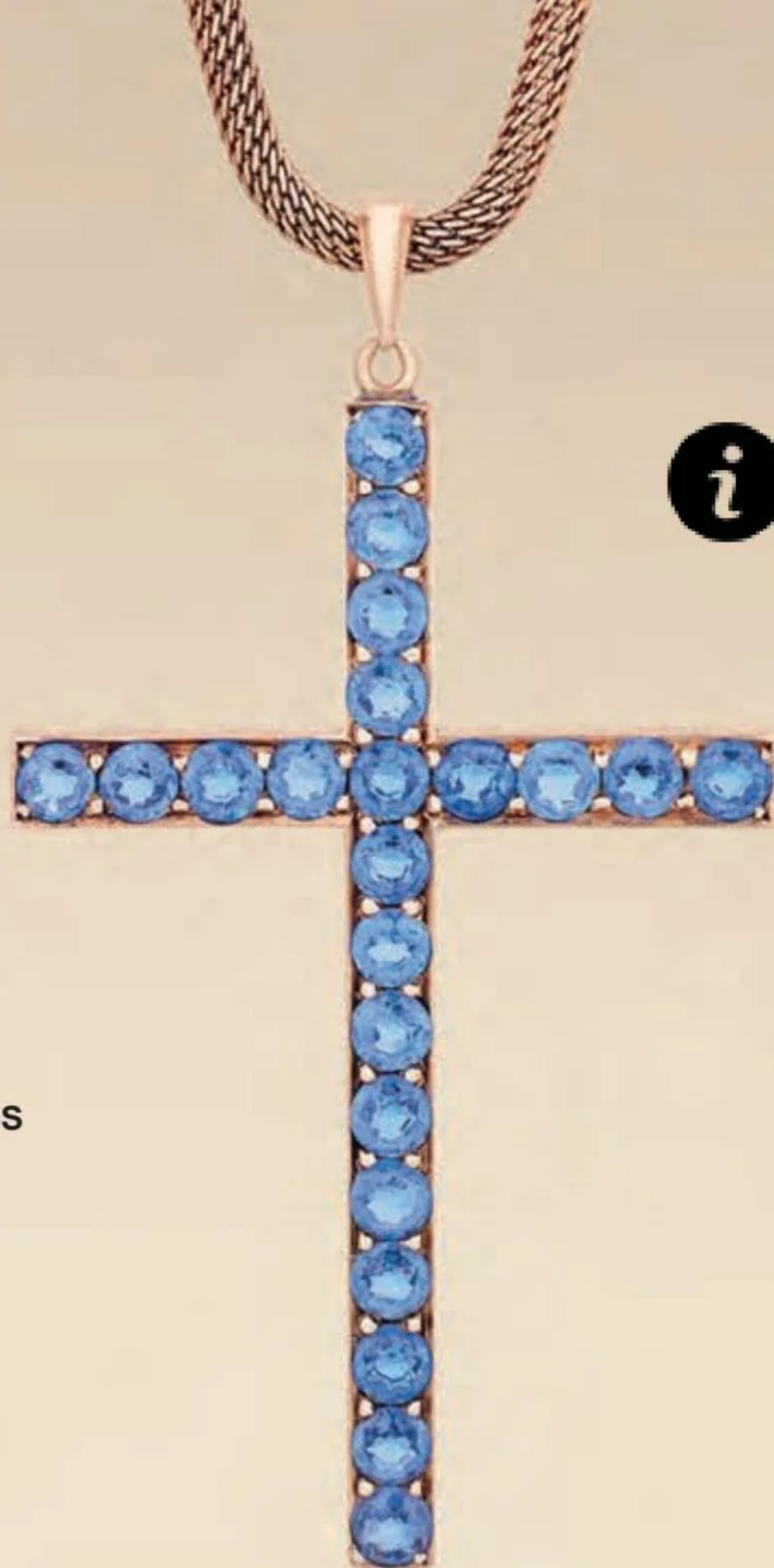
Oscar Heyman Sapphire and Diamond Ring
Signed "OHB"

Sapphires: 3.68 ctw. | Diamonds: 1.28 ctw.
Platinum

#31-9444 | \$26,850



Watch videos
of the jewelry
on these pages



Yogo Montana Sapphire Cross

GIA Certified

Montana sapphires: 5.50 ctw.
14K yellow gold | 2³/₈" length

#31-5841 | \$24,500



Fabergé Sapphire and Diamond Bracelet

Stamped with 56 standard mark and initials for Carl Fabergé

This Fabergé bracelet embodies Imperial Russia's splendor with 10 untreated oval cut blue sapphires. For decades, Fabergé adorned members of the Romanov family with their most exquisite creations. This pre-Revolution bracelet stands as a testament to the firm's enduring legacy as one of the most revered jewelers in history.

Sapphires: 18.00 ctw. | Old European cut diamonds: 1.80 ctw.
14K rose gold | 7¹/₄" length | Circa 1900

#31-9404 | \$98,500





Gibraltar Brooch Presented to Lady Mary Monro

This storied brooch, crafted by Alexander Clark & Co., was presented to Lady Mary Monro in 1929 upon her departure from Gibraltar following the death of her husband, the Governor of Gibraltar. The brooch's design, inspired by the three-turret castle on Gibraltar's flag, is artfully arranged with 67 diamonds, 12 rubies and 17 sapphires and accompanied by its original inscribed box.

Diamonds: 1.10 ctw. | Sapphires: 1.70 ctw. | Rubies: 0.60 ctw.
Platinum | 2" length | Circa 1929

#31-9422 | \$28,500



Ceylon Sapphire and Ruby Bypass Ring

C. Dunaigre Certified

Ceylon sapphire: 1.45 ct. | Vietnamese ruby: 1.35 ct.
Diamonds: 1.33 ctw. | Platinum

#31-9141 | \$78,500



Watch videos
of the jewelry
on these pages



Multicolor Sapphire Mesh Bracelet

C. Dunaigre Certified

Sri Lanka and Madagascar fancy sapphires: 65.53 ctw.
18K yellow gold | 7" length

#31-9139 | \$138,500

Oscar Heyman Multicolor Sapphire Earrings
Signed "OHB"

Blue sapphires: 6.57 ctw. | Pink sapphires: 4.04 ctw.
Yellow sapphires: 4.03 ctw. | Diamonds: 1.28 ctw.
Platinum

#31-9447 | \$98,500





Colombian Emerald and Diamond Ring
GRS and GIA Certified

Colombian emerald: 1.51 ct. | Diamond: 1.85 ct.
Platinum

#31-9140 | \$98,500



Oscar Heyman Colombian Emerald Earrings
Signed "OHB"

Colombian emeralds: 2.61 ctw. | Diamonds: 1.08 ctw.
Platinum | 1" length

#31-9446 | \$98,500



Tiffany & Co. Emerald and Diamond Bracelet
Signed "Tiffany & Co."

Emeralds: 3.25 ctw. | Diamonds: 1.80 ctw.
Platinum | 7½" length

#31-4885 | \$48,500



Watch videos
of the jewelry
on these pages



Unheated Ruby Pendant
GIA Certified

Unheated ruby: 2.13 ct. | Diamonds: 0.34 ctw.
18K white gold | 18" length
#31-9146 | \$28,500



Unheated Burma Ruby and Diamond Ring
AGL Certified

Unheated Burma ruby: 1.09 ct. | Diamonds: 2.00 ctw.
15K yellow gold and platinum | 19th century
#31-8535 | \$42,850



Unheated Burma Ruby and Diamond Ring
AGL Certified

Unheated Burma ruby: 4.06 ct. | Diamonds: 1.00 ctw.
Platinum
#31-5755 | \$178,500





Russian Silver & Niello Cane

This exquisite ebony cane is topped by a niello-inlaid silver crutch handle with swirling floral motifs. 35⁵/₈" length.

#31-8471 | \$2,250

Gold Clover Knob Cane

This handsome walking stick is topped by a gold knob handle with intricate chasing with clover motifs. 36" length.

#31-6931 | \$2,250

Meissen Cane

This elegant 18th-century cane is topped by its Baroque-form Meissen porcelain handle of exceptional beauty. 36¹/₂" length.

#31-6391 | \$3,450

Bone Dog Cane

This delightful walking stick features a man's best friend, appropriately carved from bone. 36¹/₄" length.

#26-6585 | \$2,650

Statue of Liberty Silver Cane

The sterling silver handle of this cane showcases the Statue of Liberty overlooking the iconic New York Harbor. 34³/₄" length.

#31-8983 | \$4,450

Ebony Bear Cane

The form of a bear takes shape in the handle of this rare walking stick, carved of ebony with sterling silver. 36" length.

#31-6631 | \$2,850

DREAMING IN COLOR CHAGALL & His Circle



Marc Chagall, *La joie du village*

Join us for an exhibition celebrating the visionary world of Marc Chagall and his place in one of the most vibrant artistic circles of the 20th century.

Dreaming in Color will explore Chagall's kaleidoscopic canvases alongside the works of his notable contemporaries including:

MATISSE · VAN DONGEN · VALTAT · DUFY
KISLING · PETERSON · MARTIN & More

EXHIBITION DATES
November 1st to January 4th

FRENCH QUARTER GALLERY

BUY WITH CONFIDENCE

M.S. Rau believes that exceptional, museum-quality treasures and superior customer service go hand in hand. This 112-year-old philosophy has allowed us to build lifelong relationships with clients from around the world by earning their trust one purchase at a time.

ACQUISITIONS & AUTHENTICATION

All of our acquisitions are selected and evaluated by our team of experts, led by Bill Rau, ensuring every work in our gallery has been thoroughly researched and expertly vetted for quality and authenticity.

ON APPROVAL

Many of our pieces can be sent to you on approval so you can experience the piece in your home. If not completely satisfied, you may return your item, in the exact condition as when it was shipped, for a full refund, less shipping. Ask your Sales Consultant for details.

RETURNS & OUR 125% GUARANTEE

Each piece we sell is backed by our 125% Guarantee. Anything you buy can be returned by you, in the same condition as when you purchased it, for a store credit on any other like item we own at the marked retail price, including 5% appreciation annually for up to five years following the sale. See complete details at msrau.com.

PROFESSIONAL PACKING & SHIPPING

All of our packages are professionally packed on site by a specially trained member of our shipping team. We can ship any item to any destination in the world safely, expeditiously and fully insured.



Scan to sign up to
receive text messages
from M.S. Rau



Follow us on social media to learn about our latest acquisitions, special exhibitions and more



A WORLD of WONDERS

FINE ART, JEWELS & RARITIES



Gallé Cameo Glass Table Lamp

This exquisite cameo glass lamp by Art Nouveau master Émile Gallé highlights his love of nature. Delicately etched into layered glass, the bold flowers and foliage of the Lavatera plant contrast against the yellow base, emitting a warm, enticing glow when lit. Circa 1900.

Shade and base signed "Gallé." 10"h x 7¹/₈" dia.

#31-8281 | \$29,850